

Modux One, Two & Four Pole Spot



Installation & Care Instructions

International
© 2025 LuxR Ltd

Contact

Ph: +64 9 528 9471
E: info@hunza.co.nz
Web: luxrled.com

MADE IN

NEW ZEALAND

LuxR[®]
LED BY DESIGN

Installation

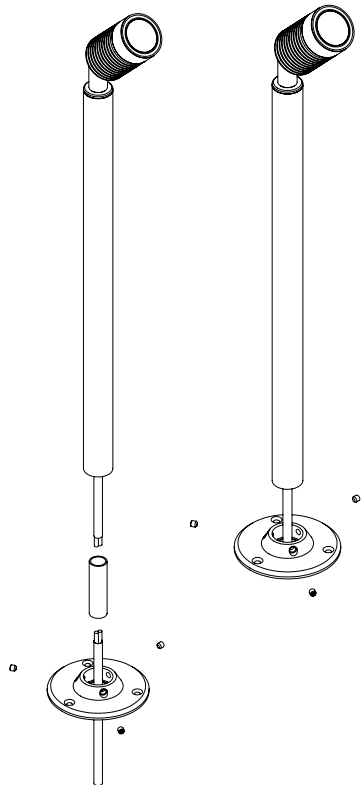
Please note these instructions must not contravene your local electrical authority regulations, with which all instructions herein must comply. Please keep instructions for future reference.

Direct Burial

1. Run low voltage cable in flexible conduit.
2. Make waterproof cable connections using adhesive lined heat shrink to the luminaire's input cables, for extra protection use Hunza Cable Joint kit #CJK150, refer to wiring guide.
3. Push pole of the luminaire directly into the ground. Apply force only to the top of the pole. DO NOT apply any pressure to the head or the connecting arm.

Flange Mount

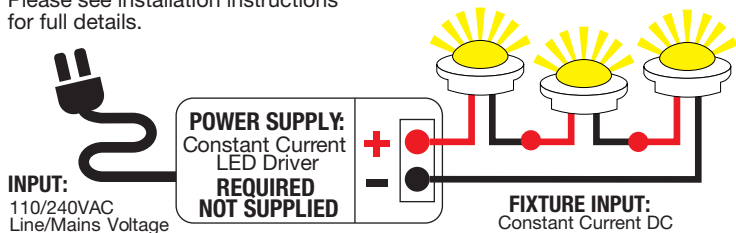
1. Run low voltage cable in flexible conduit.
2. Secure Flange Mount to desired surface using the screws provided. Feed cable up through conduit and through Flange Mount.
3. Make waterproof cable connections using adhesive lined heat shrink. For extra protection use Hunza Cable Joint kit #CJK150, refer to wiring guide
4. Place pole into Flange Mount. Push pole down until it stops, and secure with the grub screws provided. DO NOT apply any pressure to the head or the connecting arm.



Wiring Guide

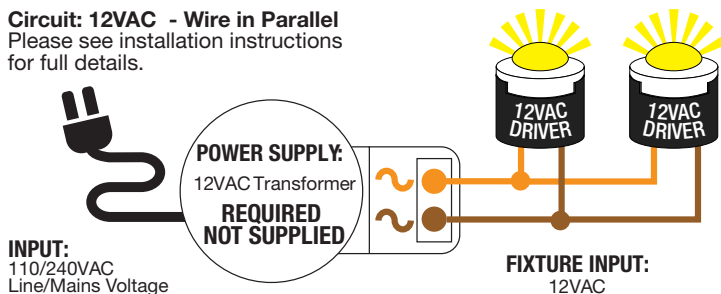
Circuit: Constant Current - Wired in Series

Please see installation instructions for full details.



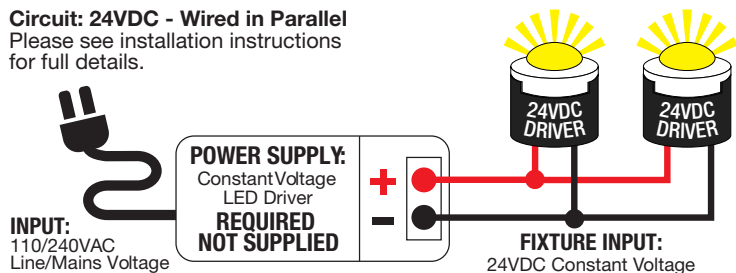
Circuit: 12VAC - Wire in Parallel

Please see installation instructions for full details.



Circuit: 24VDC - Wired in Parallel

Please see installation instructions for full details.



Material Maintenance

DO NOT use bleach, concentrated cleaners, or solvents under any circumstances.

DO NOT water blast/pressure wash luminaires

DO NOT use abrasive or polishing compounds.

Powder Coated Aluminium

If these luminaires are mounted close to the sea, it is highly recommended that the luminaires are washed down with fresh water regularly, to avoid salt build up which is deposited by the sea air onto the luminaire. To keep your powder coated aluminium luminaires in the best condition clean by wiping gently with a damp, soft cloth or chamois and window cleaner. Do not use metal polishing compounds like Brasso1, Autosol2, etc. To restore the lustre of the powder coat finish, use a silicon spray.

Solid Copper

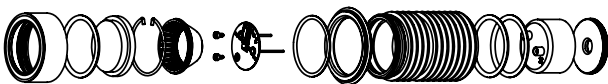
Copper will age naturally and will patina over time, it is not necessary to clean copper frequently. When it does require cleaning, wipe down with a damp cloth.

316 Stainless Steel

To maintain the finish of 316 stainless steel it is recommended to wash the luminaire with fresh water from time to time to stop salt and corrosive elements building up. If tea staining appears, a commercially available stainless steel cleaner is recommended to remove this.

Replacing the LED

Unscrew lens ring, remove glass lens, gasket optic and allen head screw/s holding down the LED board. Insert new LED board and refit allen head screw/s, optic, gasket, glass lens and lens ring.



Warranty Info

Use relay outputs for photocells and timers to prevent power supply failure.

If the mounting surface is to be acid washed, the luminaire must be removed prior to avoid damage to the luminaire

DO NOT connect the secondary side/output of a live power supply to the luminaire, as this will cause a spike in voltage that can damage the LED.

Make sure waterproof connections are made to the luminaire input cables and dimming cables. A non waterproof connection will allow water ingress into power supply/ luminaire which can lead to failure.

 10 Year Warranty	 10 Year Warranty	 5 Year Warranty	 5 Year Warranty
SOLID COPPER	STAINLESS STEEL	ALUMINIUM	ELECTRONICS

*T&C's apply. See website for details:

Luxrled.com/warranty