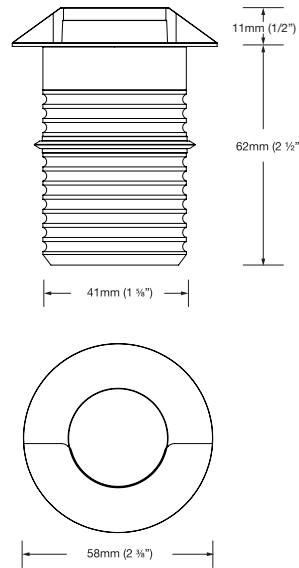


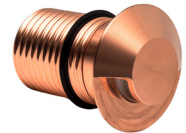
# MODUX TWO STEPLIGHT

## Specifications

|                            |  |
|----------------------------|--|
| <b>LED</b>                 | Screw Mounted 2W 3vf Cree XPG-3 LED  |
| <b>Power</b>               | 2 Watt   |
| <b>Output</b>              | 180lm, 85 lm/w   |
| <b>LED Life Expectancy</b> | 50,000 hours L70   |
| <b>CRI (3000K)</b>         | 90+  |
| <b>Cable</b>               | H05RN-F 1m   |
| <b>Ingress Protection</b>  | IP68   |
| <b>Warranty</b>            | Electronics = 5 years<br>(Excludes third party lamps and power supplies)<br>Aluminium = 5 years<br>Copper = 10 years<br>Stainless Steel = 10 years |
| <b>Standards</b>           | CE<br>UL676<br>UL1598<br>UL1838<br>UL2108  |



Black Powder Coated Aluminium



Solid Copper



316 Stainless Steel With Slot

\*Delivered from the luminaire with an unobstructed beam

## Product Configuration

M2SL  M2SLS

| Power   | Material/Finish   | Colour   | Accessories  |
|---|---|--|--|
| <input type="checkbox"/> <ul style="list-style-type: none"> <li><b>R</b> Constant Current Input, Series Wired, 2W<br/>Requires Constant Current Driver (not supplied).<br/>Fixture Input: 3Vf @ 700mA maximum.</li> <li><b>IA</b> 12VAC Input, Parallel Wired, 2W<br/>Requires Magnetic/Wire Wound 12VAC Transformer (not supplied).<br/>Fixture Input: 12VAC, 2W (700mA).</li> <li><b>ID</b> 24VDC Input, Parallel Wired, 2W<br/>Requires 24VDC Constant Voltage Power Supply (not supplied).<br/>Fixture Input: 24VDC, 2W (700mA).</li> </ul> | <input type="checkbox"/> Powder Coated Aluminium <ul style="list-style-type: none"> <li><b>A</b> <ul style="list-style-type: none"> <li><b>EBK</b> Black</li> <li><b>EBZ</b> Bronze</li> <li><b>EOGR</b> Olive green</li> <li><b>EWH</b> White</li> <li><b>EWB</b> White Birch</li> <li><b>EDG</b> Dark Grey</li> <li><b>ESTAR</b> Silver Star</li> <li><b>ECT</b> Corten</li> <li><b>FS</b> Fine Silver</li> </ul> </li> <li><b>C</b> Solid Copper</li> <li><b>AC</b> Aged Solid Copper</li> <li><b>S</b> 316 Stainless Steel</li> <li><b>EPS</b> Electropolished 316 Stainless Steel</li> </ul> | <input type="checkbox"/> <ul style="list-style-type: none"> <li><b>2</b> 2700K</li> <li><b>3</b> 3000K</li> <li><b>4</b> 4000K</li> <li><b>A</b> Amber</li> <li><b>B</b> Blue</li> <li><b>G</b> Green</li> <li><b>R</b> Red</li> </ul> | <input type="checkbox"/> <input type="checkbox"/> <input type="checkbox"/> <ul style="list-style-type: none"> <li><b>PCAN</b> PVC Canister</li> <li><b>DCAN</b> Deck Canister</li> <li><b>SCAN</b> Security Canister</li> <li><b>ACAN</b> Aluminium Canister</li> <li><b>ALFC</b> Aluminium Floor Mount Canister</li> <li><b>RP</b> Recessed Plug</li> </ul> |

# Luminaire Information

CNC machined from the following materials

## Powder Coated Aluminium

Virgin, high corrosion resistant, low copper content (0.001%) aluminium with chromate substrate, and a highly UV-resistant polyester powder coat.

## Solid Copper

110 high-purity copper alloy with a minimum copper content of 99.9%. Due to the nature of copper, it patinas over time. This patina acts as a protective layer that prevents further corrosion and enhances the metal's resistance to the elements.

## 316 Stainless Steel

316 Stainless Steel with high corrosion resistance and superior resistance against rust and abrasion.

## Gaskets

Silicone, iron impregnated 220°C (228°F).

## Lens

Extra clear, low iron, shatter resistant

## Mounting

Recessed canisters make installation easy—core a hole or cast the canister in place, then push in the fitting. A silicone wiper seal holds the luminaire securely.

## Load Rating

|                 |   |
|-----------------|---|
| Aluminium       | Not suitable for drive over applications! |
| Copper          | Not suitable for drive over applications! |
| Stainless Steel | 2000kg/11000lbs                           |

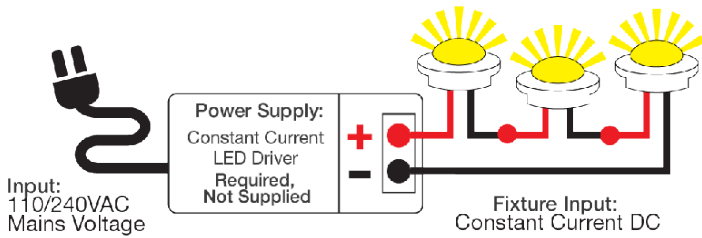
# Accessories



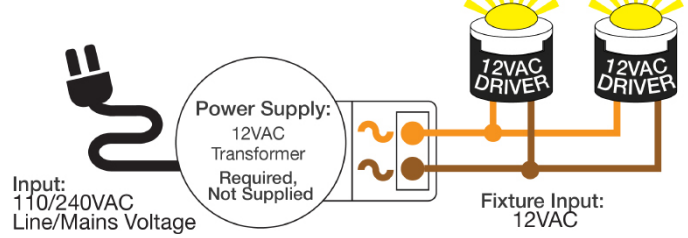
# Wiring Guide

Diagrams are a guide only, wire colours and polarity may change depending on fixture and country.

## Circuit: Wire in Series With Remote Driver



## Circuit: 12VAC - Wire in Parallel



## Circuit: 24VDC - Wired In Parallel

