

PRODUCT CONFIGURATION

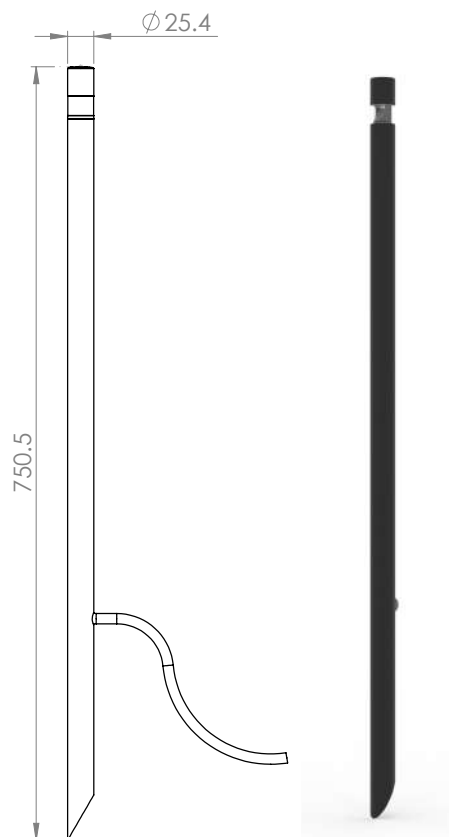
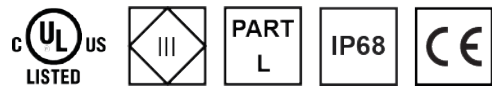
Please fill in appropriate codes into boxes provided

Power	Flange	Driver	Material	Colour	Accessories
<input type="text" value="M1"/>	<input type="text"/>	<input type="text"/>	<input type="text"/>	<input type="text"/>	<input type="text"/>
M1 1 Watt	WF Wayfinder	<input type="text" value="R"/> Remote CC <input type="text" value="IA"/> Integral 12VAC <input type="text" value="ID"/> Integral 24VDC	<input type="text" value="C"/> Copper <input type="text" value="S"/> Stainless Steel <input type="text" value="A"/> Aluminium* <input type="text" value="BK"/> Black <input type="text" value="BZ"/> Bronze <input type="text" value="W"/> White	<input type="text" value="27"/> 2700K <input type="text" value="30"/> 3000K <input type="text" value="40"/> 4000K <input type="text" value="R"/> Red <input type="text" value="G"/> Green <input type="text" value="B"/> Blue <input type="text" value="A"/> Amber	FM Flange Mount

*Please specify powder-coat colour when ordering an aluminium luminaire.

SPECIFICATIONS

Power	1 Watt
Ingress Protection Rating	IP68
Cable	1 meter H05RN-F
Material	- Black/Bronze/White Powder Coated Aluminium - Natural Copper - 316 Stainless Steel
Removable Light Engine	Pin Mounted 1W 3vf Cree XPG-3 LED
Colour Temperature	2700K, 3000K, 4000K
CRI	90+ CRI
Efficacy	80lm/w - delivered from luminaire with unobstructed beam
Input	350mA Constant Current 12VAC 24VDC
Warranty	Electronics - 5 Years Aluminium components - 5 years Copper and Stainless Steel components - 10 years
LED Shield	LED Bypass Shunt LED Reverse Polarity Protection
LED Life Expectancy	50,000 Hours
B Number	94.05



ACCESSORIES

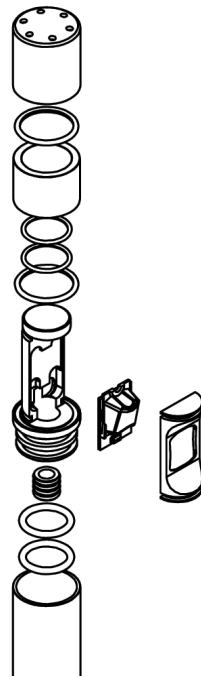
Flange Mount
(Please refer to the accessories page)

www.luxrled.com

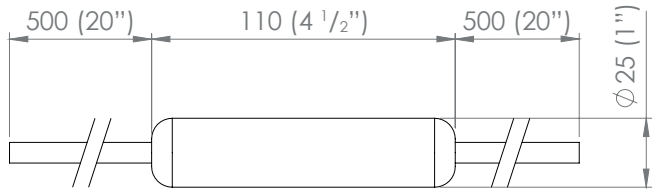
BEAM ANGLE



Asymmetric Beam



INTEGRAL (12VAC/24VDC) DRIVER HOUSING



M1 WAYFINDER

The M1 luminaire range is powered by a 1 watt LuxR light engine that offers a wide choice of LED colours. The luminaire was developed to meet the challenge of delivering high quality practical accent lighting with maximum energy efficiency and a long, maintenance-free life.

All LuxR luminaires offer a replaceable LED system using Cree LED chips for maximum performance and long life. Precise LED binning by Cree ensure the same colour temperature across all our luminaires which allows LuxR products to be situated close to one another without the fear of colour variance in the colours.

This luminaire is extremely tough, durable and waterproof, making it ideal for installation in public spaces, large-scale projects and residential areas.

REPLACING COMPONENTS

Firstly, pull the head of the product out of the pole Unscrew the lid and slide the lens off paying close attention to the assembly order or refer to the diagram below. Locate the item that need to be replaced, it is imperative you replace the component with factory LuxR parts to ensure correct operation of the luminaire.

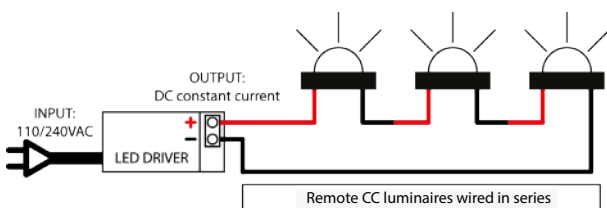
When reassembling make sure all the components are in their correct order to ensure water tightness and correct light output.

RECOMMENDATIONS

If you are unable to spike this luminaire into gardens or along side paths you can specify this product with a surface mount flange. This allows the user to mount the luminaire where it is not possible to spike it in, such as concrete.

REMOTE DRIVER WIRED IN SERIES

Often referred to as series wiring the current in a series circuit follows one path from start-to-finish with the positive of the second LED connected to the negative of the first. Series wiring allows a single driver to be mounted remotely, powering a number of series fitting. Often the most simplest of wiring schemes as each fitting is connected to the next in a daisy chain. It removes the need for a smaller 12 volt driver in each fitting.



INTEGRAL (12VAC/24VDC) + 12VAC TRANSFORMER / 24VDC POWER SUPPLY

In a parallel circuit, the positive connections are tied together and brought back to the positive output of the 12VAC Transformer / 24VDC Power Supply. The negative connections are tied together and brought back to the negative output of the 12VAC Transformer / 24VDC Power Supply. The integral driver option allows LuxR fittings to be wired in parallel to existing or new installations where a wire wound or magnetic 12VAC Transformer or 24VDC Power Supply is used.

