

Light efficiency:

60 Lumen/Watt

Light quality:

CRI: 91.1

Color temperature:

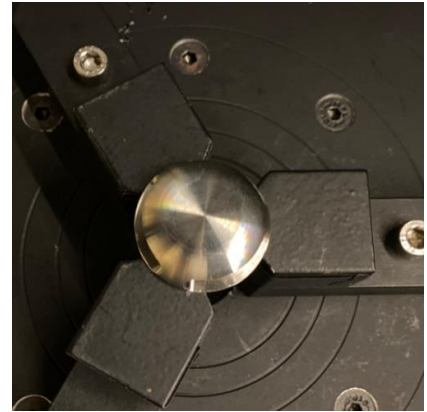
2951 K

Output: 63.0 lm

Peak: 24.4 cd

Power: 1.1 W

PF: 1.0



Tracking number: [n/a](#)

Product name:

Micro Path - 3000K - Stainless

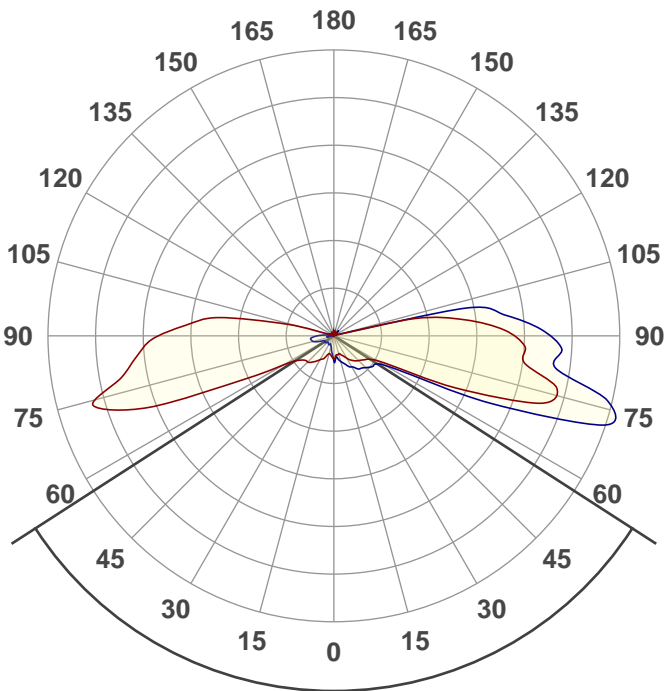
Item number:

MMPLRS30

Date and time:

26/08/2020 2:14:34 PM

Description:



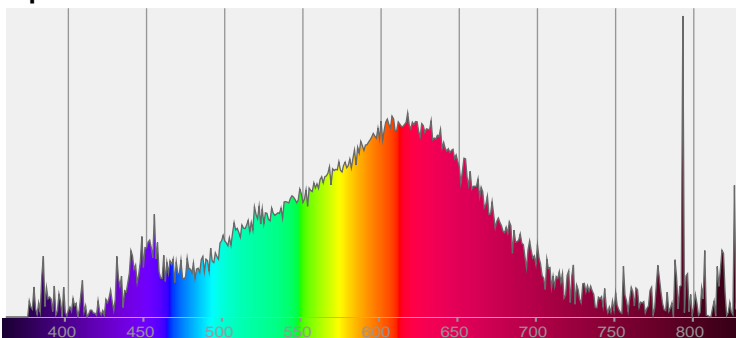
Beam angle

114.4°

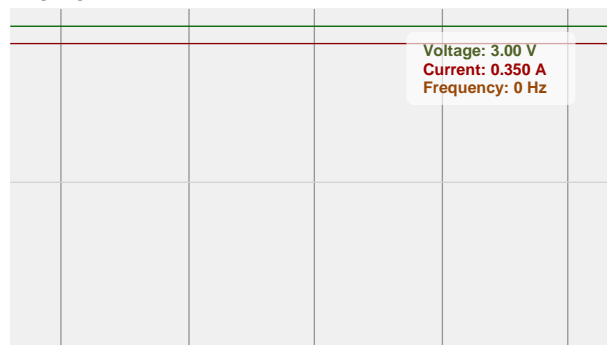


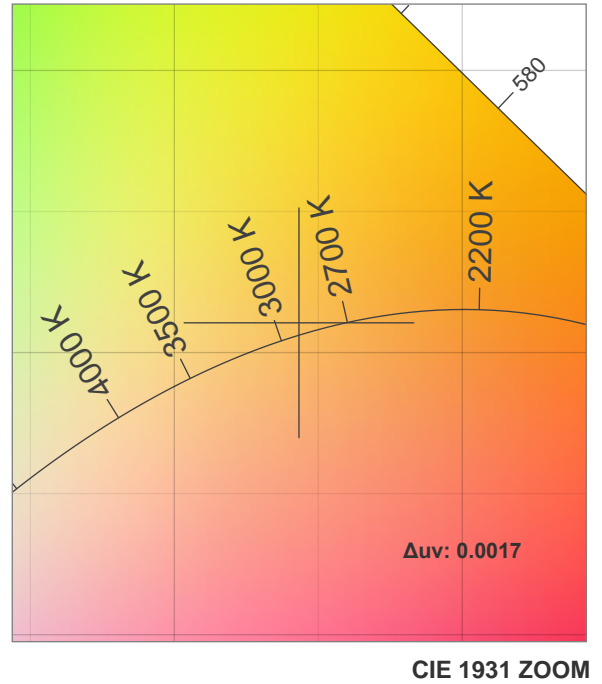
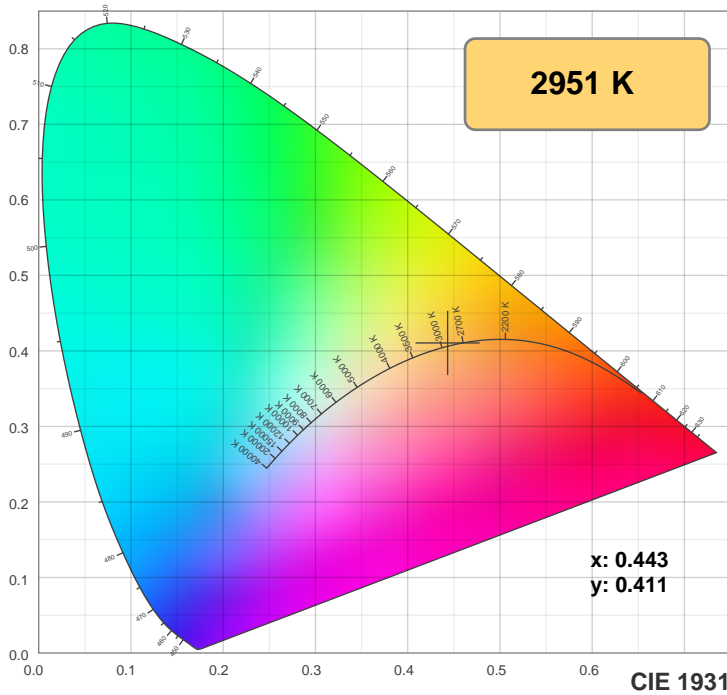
CIE 1931
x: 0.443
y: 0.411

Spectra

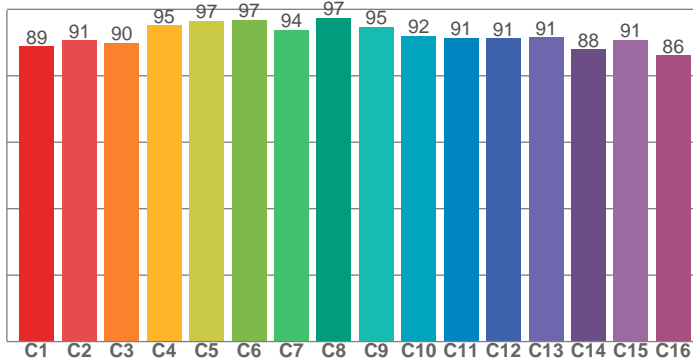


Power

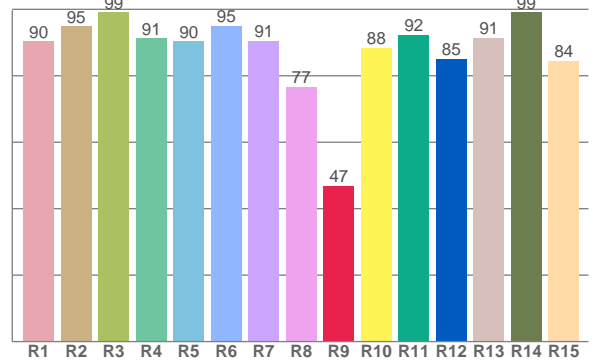




TM-30: 92.2



CRI: 91.1 (R1-R8)



CRI R values, only R1-R8 are used to calculate final CRI value

R1	R2	R3	R4	R5	R6	R7	R8	R9	R10	R11	R12	R13	R14	R15
90.3	95.0	99.1	91.3	90.5	95.1	90.6	76.7	46.9	88.4	92.4	85.1	91.4	99.2	84.5

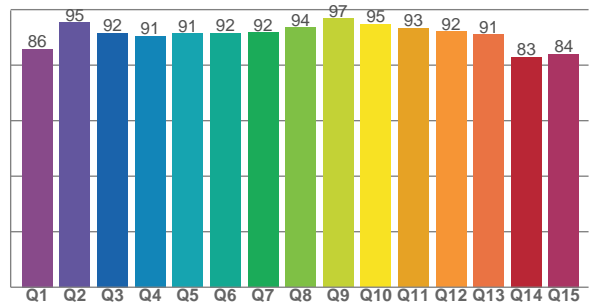
TM30 C values, 16 binned values out of total of 99 C values

C1	C2	C3	C4	C5	C6	C7	C8	C9	C10	C11	C12	C13	C14	C15	C16
88.8	90.6	89.8	95.2	96.5	96.9	93.9	97.5	94.7	92.1	91.5	91.2	91.5	87.9	90.8	86.1

CQS Q values

Q1	Q2	Q3	Q4	Q5	Q6	Q7	Q8	Q9	Q10	Q11	Q12	Q13	Q14	Q15
85.9	95.4	91.6	90.5	91.4	91.6	91.8	93.5	96.8	94.7	93.3	92.1	91.0	83.0	84.0

CQS: 90.1



Color parameters

Color temperature	Color rendering index	Red component	Color fidelity	Color gamut	Color quality scale	Color coordinate cie 1931	Color coordinate cie 1931	Color coordinate	Color coordinate	Color deviation from black body
CCT	CRI	CRI R9	TM30 Rf	TM30 Rg	CQS	x	y	u	v	Δuv
2951 K	91.1	46.9	92.2	97.4	90.1	0.443	0.411	0.252	0.350	0.0017

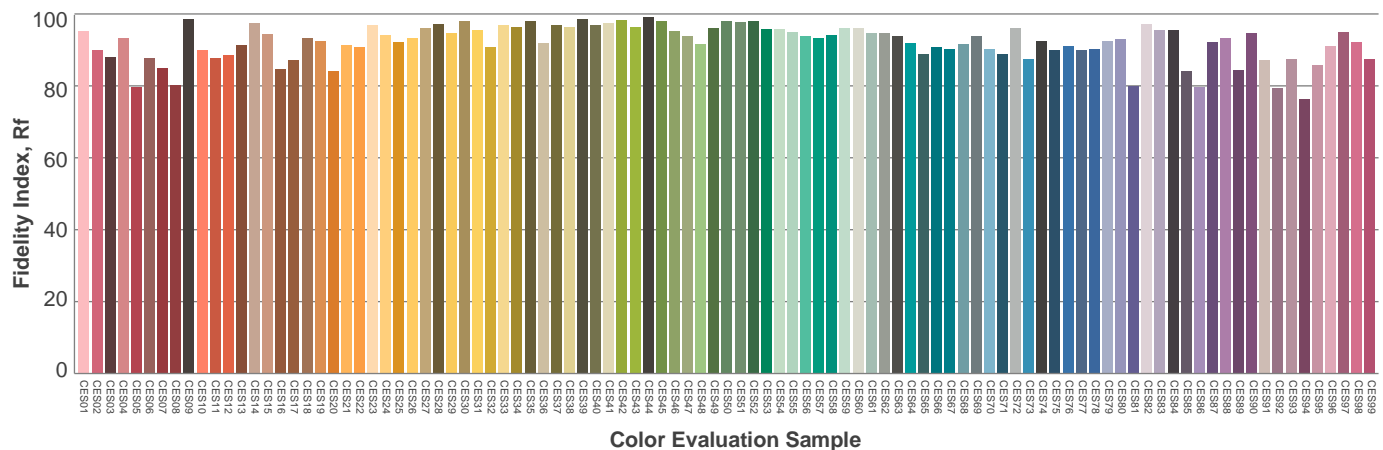
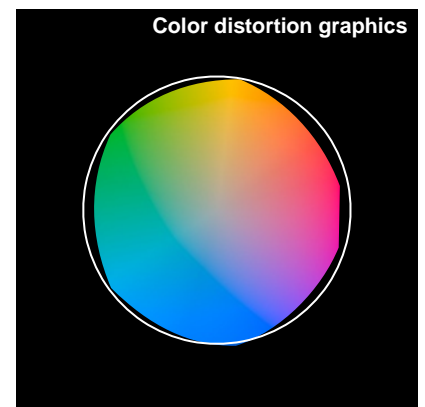
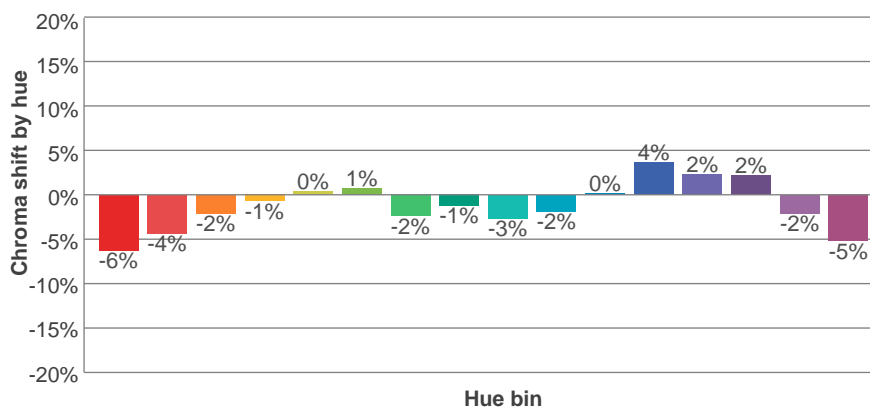
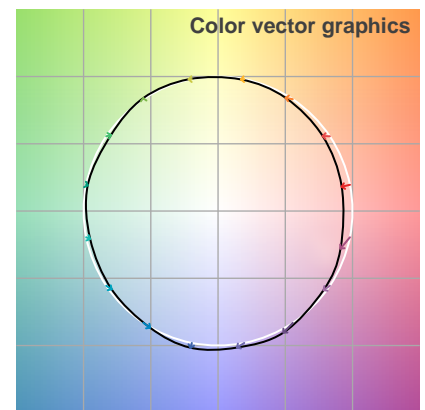
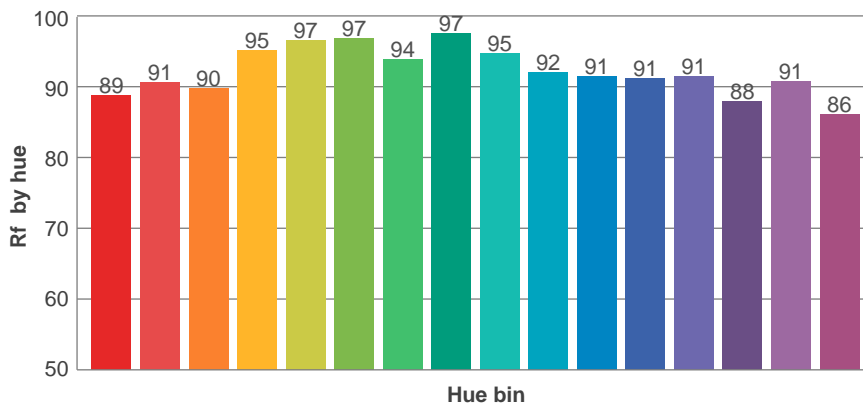
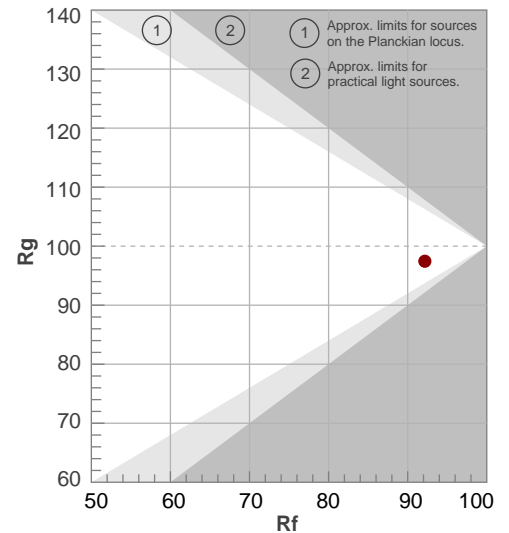
Rf 92.2

Fidelity index Rf

Rg 97.4

Gamut index Rg

Hue Bin	R _f	Shifts (%)	
		Chroma	Hue
1	89	-6%	0%
2	91	-4%	3%
3	90	-2%	5%
4	95	-1%	2%
5	97	0%	2%
6	97	1%	0%
7	94	-2%	-3%
8	97	-1%	0%
9	95	-3%	2%
10	92	-2%	4%
11	91	0%	6%
12	91	4%	0%
13	91	2%	-6%
14	88	2%	-10%
15	91	-2%	-5%
16	86	-5%	-10%



LCS table

BUG rating:	B0 U2 G0	
Forward light	Lumens	Lumens %
Low(0-30):	0.7	1.1%
Medium(30-60):	3	4.7%
High(60-80):	11.5	18.3%
Very high(80-90):	7.3	11.6%
Back light		
Low(0-30):	0.7	1.2%
Medium(30-60):	3.1	5%
High(60-80):	13.6	21.6%
Very high(80-90):	7.9	12.6%
Uplight		
Low(90-100):	11	17.5%
High(100-180):	4.1	6.5%

LCS graph

